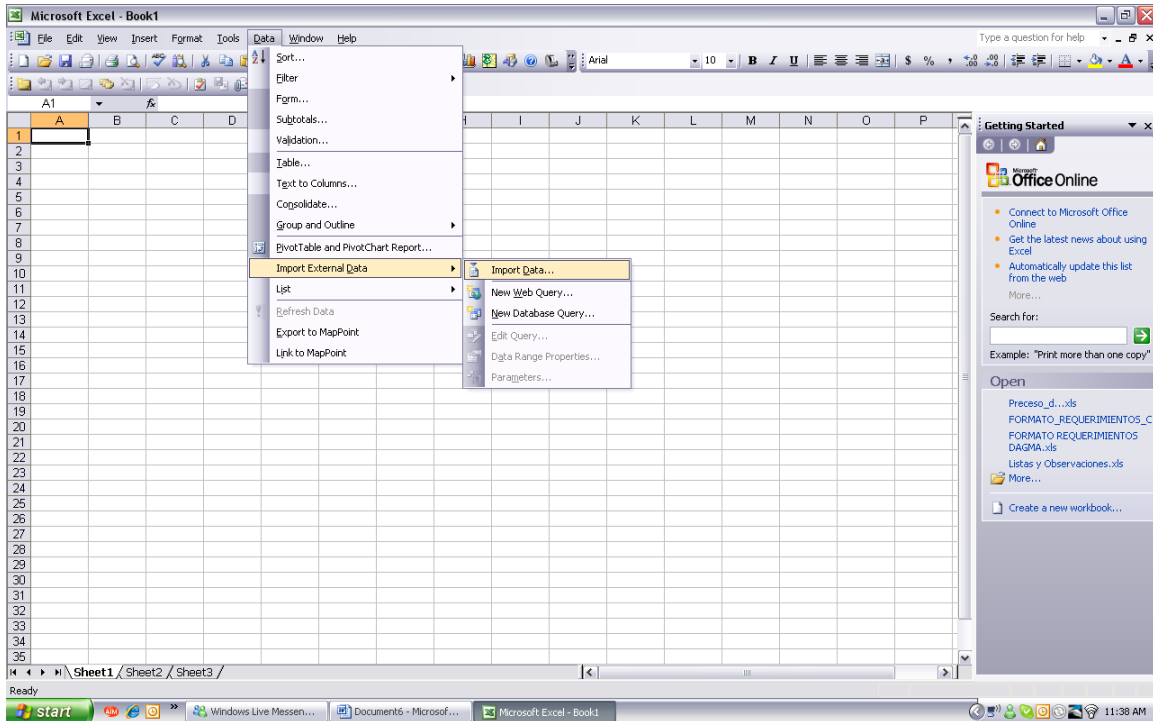
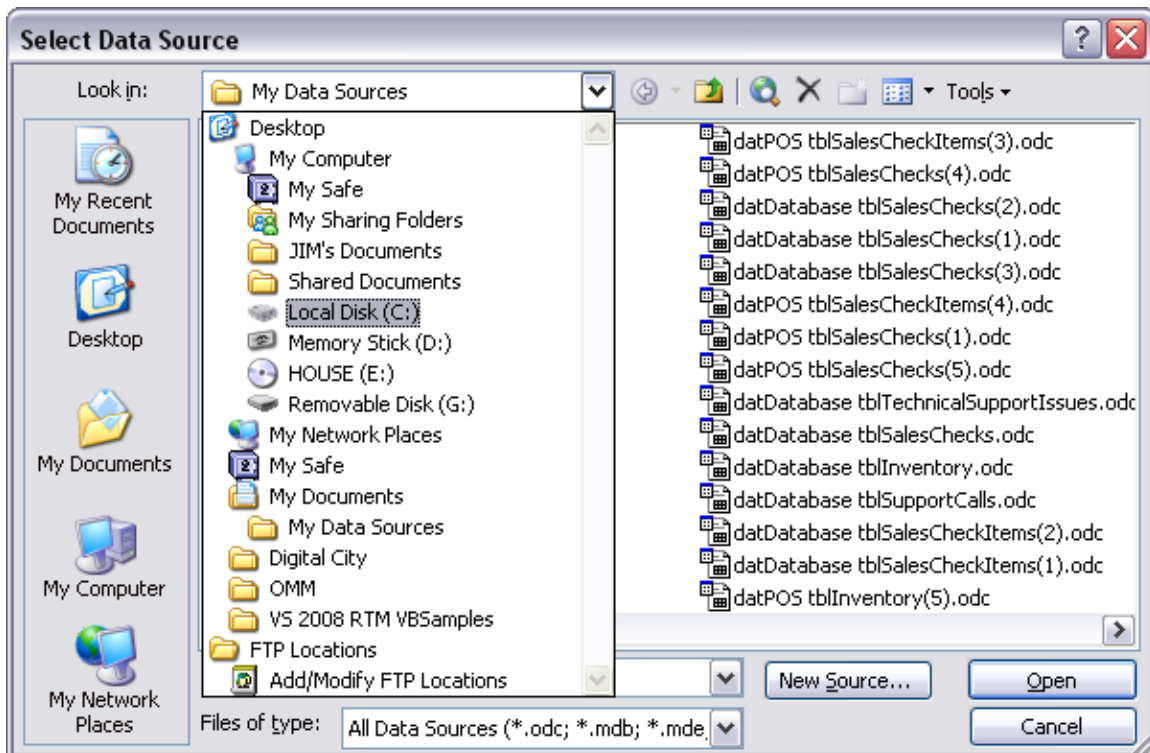


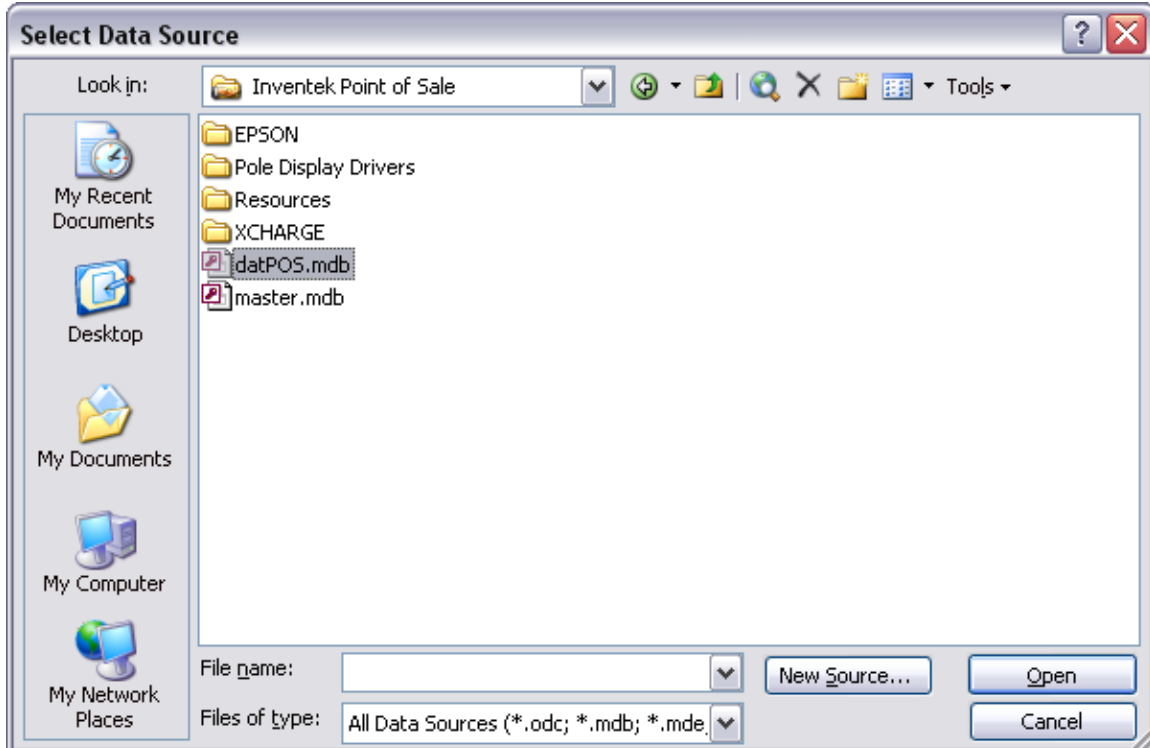
Importing Inventory Data to Excel



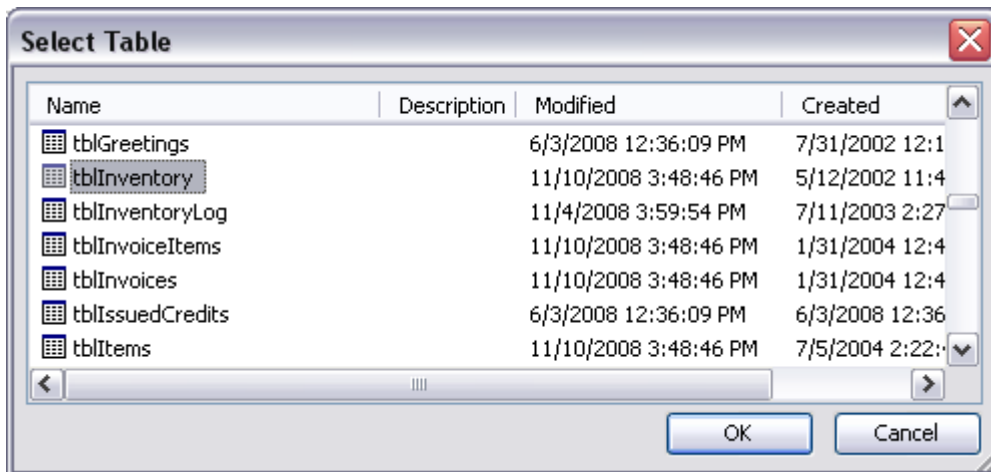
Click on Data -> Import External Data, and Import Date...



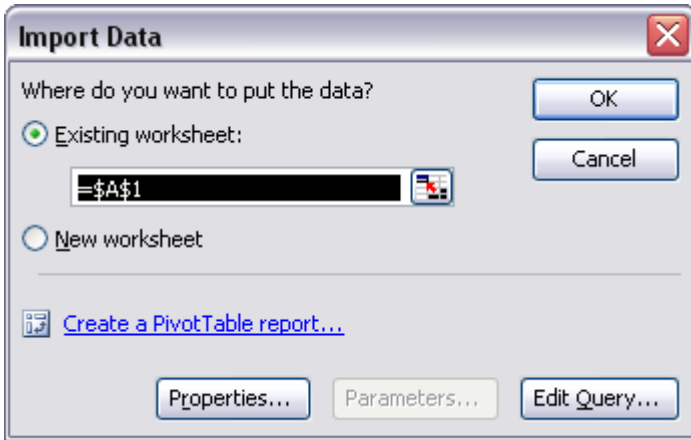
Navigate to Local Disk C -> Program Files -> Inventek Point of Sale Directory



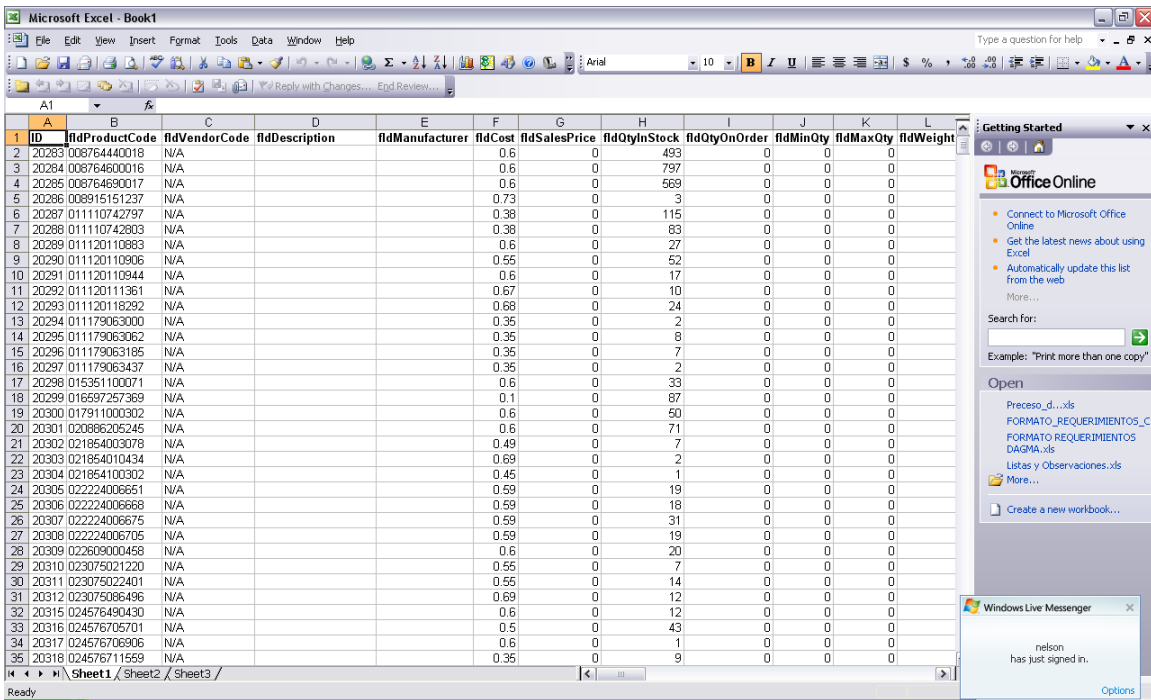
Select datPOS.mdb and click on Open



Select the table you wish to import. In this case, it would be Inventory, meaning tblInventory, and hit OK.



Leave the default selection, and hit OK.



Bingo, you done. Repeat for each table you would like to export.