



Updating a Database

Before starting, exit out of ALL POS SYSTEMS. Then:

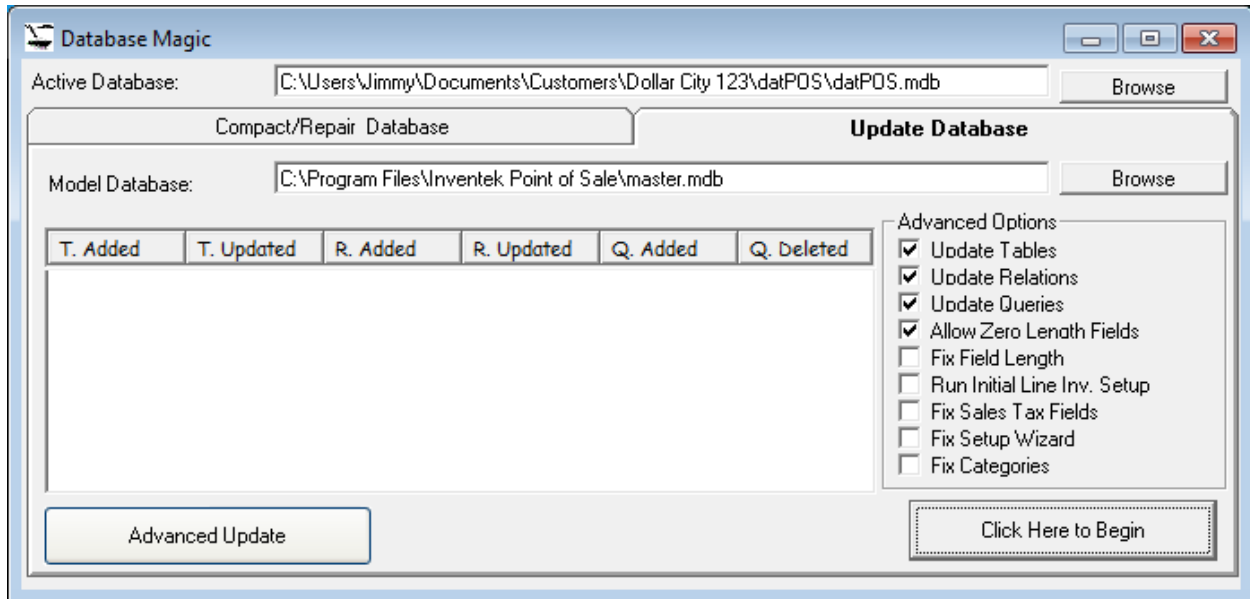
Double click on the POS icon as normal, and the logon screen will appear as seen below:

<p>Welcome to Inventek Point of Sale. Please enter your User ID and password below.</p> <p>User ID: <input type="text"/></p> <p>Password: <input type="password"/></p> <p>Register #: <input type="text" value="2"/></p> <p><input type="button" value="OK"/> <input type="button" value="Cancel"/></p>	
--	--

Enter Update as the User ID and leave password blank:

<p>Welcome to Inventek Point of Sale. Please enter your User ID and password below.</p> <p>User ID: <input type="text" value="update"/></p> <p>Password: <input type="password"/></p> <p>Register #: <input type="text" value="2"/></p> <p><input type="button" value="OK"/> <input type="button" value="Cancel"/></p>	
---	--

Click OK, and the following screen will appear:

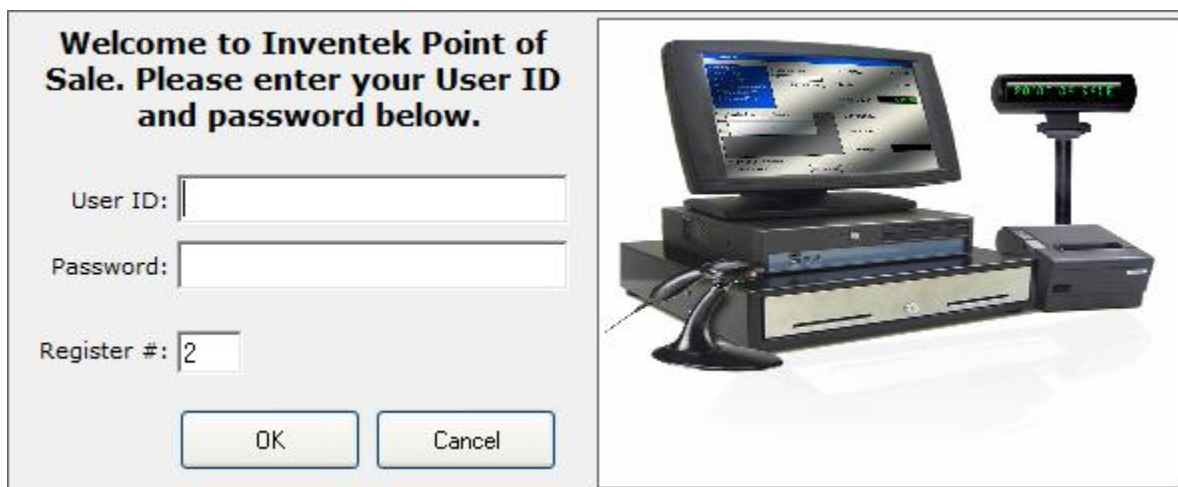


Click on [Click Here to Begin]. When completed, you will see the login screen appear again. Exit completely, and follow the same steps as before to continue to the Advanced Update as seen below.

Updating a Database using Advanced Mode

Before starting, exit out of ALL POS SYSTEMS. Then:

Double click on the POS icon as normal, and the logon screen will appear as seen below:




Enter Update as the User ID and leave password blank:

Welcome to Inventek Point of Sale. Please enter your User ID and password below.

User ID:

Password:

Register #:



Click OK, and the following screen will appear:

Database Magic

Active Database:

Update Database

Model Database:

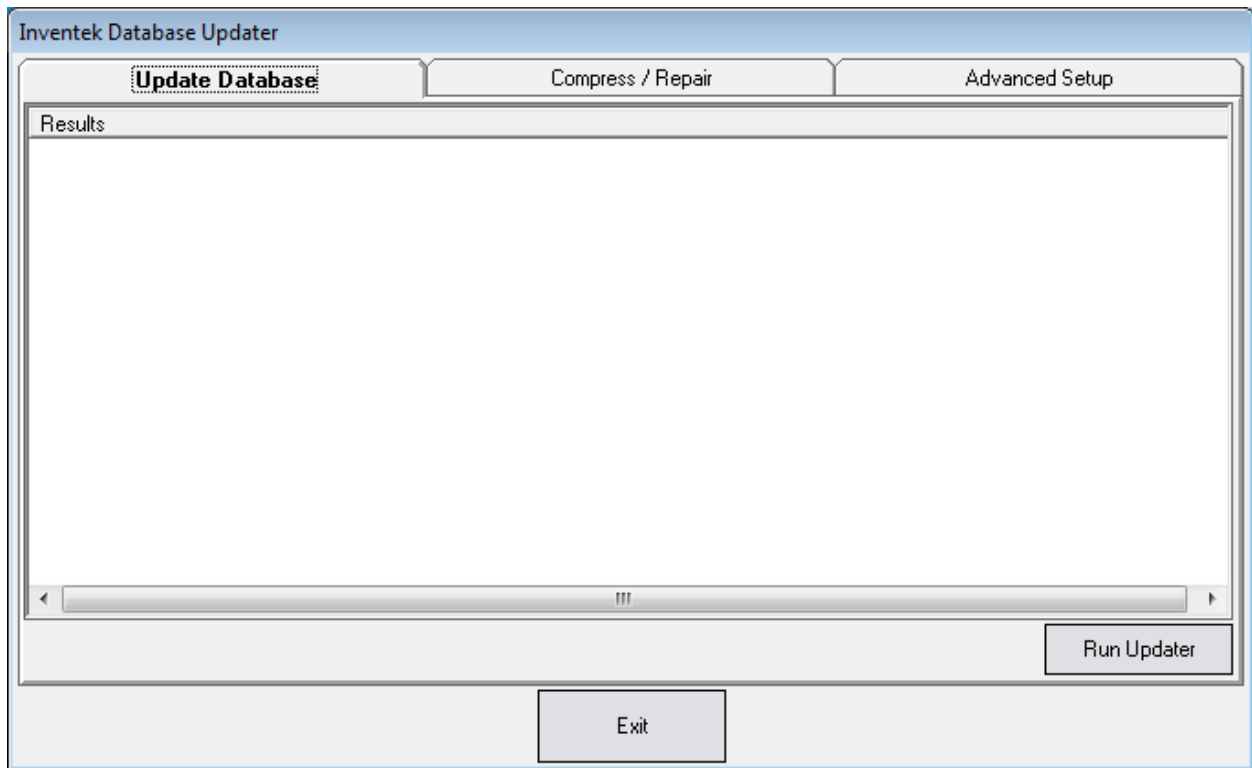
T. Added	T. Updated	R. Added	R. Updated	Q. Added	Q. Deleted

Advanced Options

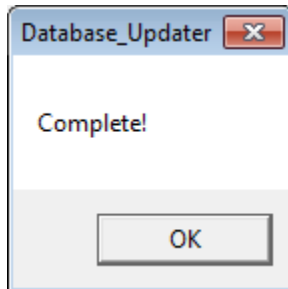
- Update Tables
- Update Relations
- Update Queries
- Allow Zero Length Fields
- Fix Field Length
- Run Initial Line Inv. Setup
- Fix Sales Tax Fields
- Fix Setup Wizard
- Fix Categories

Click on Click Here to Begin. When completed, you will see the login screen appear again. Exit completely, and follow the same steps as before to continue to the Advanced Update

Click Advanced Update:



Click on Run Updater.



When complete, you will get the screen above.